



RISE

The Electric Height Adjustable Table



THE **FUTURE** OF THE WORKPLACE IS HERE TODAY.

RISE FREE YOURSELF

Studies show that sitting all day at a fixed height work surface can result in repetitive strain injuries, slowing metabolism and obesity. Simply standing burns 60 more calories per hour than sitting.

It is not only healthier to regularly change from a seated to a standing position, but studies prove that employees at height adjustable workstations are significantly more productive. Employers save on churn costs, decrease each employee's real estate footprint and show a commitment to worker well-being.

RISE electric tables are simple and effortless to adjust. The unparalleled height range of 22" – 48" allows virtually all workers to sit and stand in an ergonomically correct position, exceeding ANSI/BIFMA specifications.



ELECTRIC & INNOVATIVE

MARKET LEADING SPECIFICATIONS

Electric motors provide **effortless adjustment**, without any 'creep' associated with pneumatic legs or the need to re-calibrate the table as loads change.

The sophisticated **anti-collision function** automatically cuts off the motors when the table hits an immovable object on the way up or on the way down, preventing accidental damage.

RISE tables are **the greenest** available on the market today, using approximately 5 cents worth of energy per year in standby. Bases are free of BPA's, PVC, halogen and chemical lubricants ensuring a safe, non-toxic environment. **RISE** bases are made from **58% recycled materials**.

RISE bases are available in silver and black, but can be ordered in any color to match other manufacturers' systems furniture.*

**Upcharge may apply*

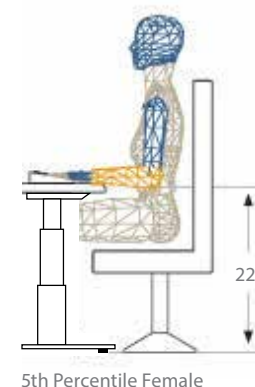
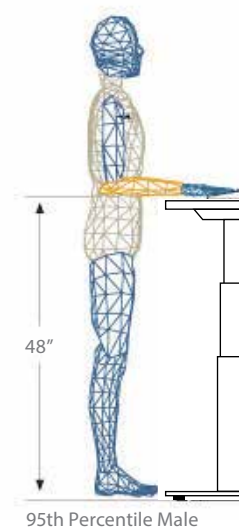


THE RIGHT WORKSTATION FOR YOUR NEEDS

CUTTING EDGE DESIGN AND TECHNOLOGY

RISE tables are precision-engineered to the highest standards of quality and functionality. Key manufacturing innovations and the use of reputable European-made components ensure that RISE tables will outlast their considerable warranty without breakdown.

RISE tables are width adjustable, so one base can be reused if the worksurface size changes. Bases are available in a range of configurations, including 3-leg (90 and 120 degree), 4-leg, peninsula and with 350lbs weight capacity. At 38db, RISE has the quietest operation of any table in its class.



Euro-inspired flat low profile foot creates a sleek modern aesthetic.



Standard up/down switch moves the work surface with push button ease.



Hidden frame elements provide unmatched support with keyboard arm compatibility, and the frame is width adjustable so one base fits tops from 48" to 72".



Three-stage legs smoothly and silently to adjust the work surface height from 22" to 48".



Optional digital read out memory switch allows up to four user-programmable height settings.



Three-leg tables feature a foot-free center leg to enhance design symmetry.



THE COMPLETE SOLUTION

Shown above – Fire red base with phenolic white top

BOOST PRODUCTIVITY WITH RISE ACCESSORIES

- ① Table Top
- ② Monitor Arm
- ③ LED Desk Light
- ④ Acrylic Privacy with Modesty Panel
- ⑤ Keyboard Arm & Tray
- ⑥ Power and USB Center
- ⑦ Cable Trough & Undermounted Power
- ⑧ Cable Sleeve



ISE Inc. 1.800.463.7731
info@ise-group.com
www.ise-group.com